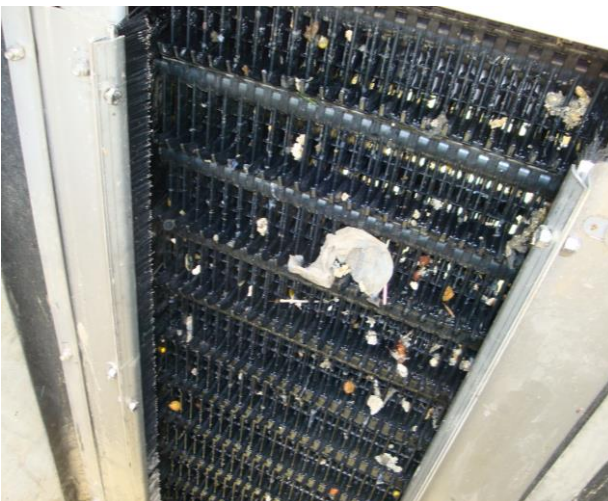


# FilterONE USA

## F1 InFloMax™ Continuous Screen



- The new and improved self-cleaning filter screen
  - “SuperClean” extended head design for maximum solids release
  - Stronger chain and rail designs for longer life
  - Advanced front seals for higher capture
- The F1 InFloMax™ Continuous Screen is the solution for all tough screening applications
- 75 years of design and service expertise built into every screen
- Low head loss
- 3, 6, or 15 mm screen openings
- Pivots from channel for easier O&M
- Elements available in either 100 or 200 mm pitch
- 60°, 75°, and 85° designs
- Widths from 1’6” to 8’0”
- Discharge heights up to 50 feet
- No submerged bearings
- All stainless steel frames, shafts, and chain for longest life
- Combine with F1 Compactor Washer and Shaftless Conveyor for a complete screening system
- Made in the USA!

**Keep America Working!**



FilterONE USA LLC  
Deerfield Beach FL 33442  
954-757-9741  
[www.filteroneusa.com](http://www.filteroneusa.com)

# FilterONE USA

## F1 InFloMax™ Continuous Screen

### Principle of Operation

The FilterONE F1 InFloMax™ Continuous Screen is a robust, reliable, and fully automated influent bar screen that captures solids from a moving wastewater stream in a channel, conveys the screenings to the top of the channel, and discharges the solids into a compactor or conveyor, prior to disposal.

The F1 InFloMax™ Continuous Screen is capable of performing in a wide variety of both municipal and industrial applications.

The F1 InFloMax™ Continuous Screen can be designed with either 3 mm, 6 mm, or 15 mm screening element spaces, to remove the required solids from a wastewater treatment facility influent. The molded plastic elements are assembled together on a series of stainless steel shafts, with each element being supported by two parallel shafts, adjacent elements alternating between the leading and trailing shafts. The shafts are supported by stainless steel chain links, located on both sides, to form a complete screening belt.

At the top of the screen, the belt changes direction and travels through the discharge area where the larger solids fall off the face of the screening belt by gravity. In the discharge area, the belt changes direction again, and any remaining screenings are wiped off each leading row of elements, by a unique cleaning interaction with the row of elements that follows. Thus, the elements are truly self-cleaning, and the interaction of each row of elements, in conjunction with the changes in belt direction, is the main means of discharging solids from the belt. A rotating brush is provided to assist in removing any screenings that may hang up on the tips of the elements.

Our “extended head” design, called the SuperClean, is standard on all of our screens, and insures maximum solids release in the discharge zone. The SuperClean can be supplied with two (2) sprays and a separate brush drive (optional) depending upon the application.

The standard unit is designed and manufactured completely of 304 stainless steel (with upgrade to 316 stainless steel available), with the exception of the elements, rotating brush, side seals, and chain cover. FilterONE can provide customized safety covers, with inspection doors, as well as complete control systems for fully automated operation.

The F1 InFloMax™ Screen has no submerged bearings and can pivot out of the channel to make O&M easier. Our improved chain and rails are designed for longer life and reduced O&M costs.

The F1 InFloMax™ Continuous Screen can be coupled with an F1 Compactor, or an F1 Screenings WasherCompactor, to provide a complete screenings removal and handling system for the headworks of wastewater treatment facility.

For a user friendly, trouble-free, and extremely reliable influent bar screen, make the FilterONE F1 InFloMax™ Continuous Screen your first and only choice.

**Keep America Working!**



FilterONE USA LLC  
Deerfield Beach FL 33442  
954-757-9741  
[www.filteroneusa.com](http://www.filteroneusa.com)